

DATE

ENTER VERY BRIEFLY—OFFICE AND FIELD VISIT DATA, PHONE CALL DATA, TRANSCRIPT OF LETTERS

WORKER

8-16-62 F.V. The following was installed by Beckwith
Cement Products Co. 750 gal concrete septic
tank with distribution Box 100' tele trenches
3' wide, 2 lines 50' each. System is O.K. BAW

100
36.80 Ac.

8

9

LOT 1

204
2.44 Ac. NORTH 39.24

202
21.93 Ac.

200
9.20 Ac.

201
7.65 Ac.

LOT 7

LOT 8

10-14

400 30.15 Ac. 10-02

39.24

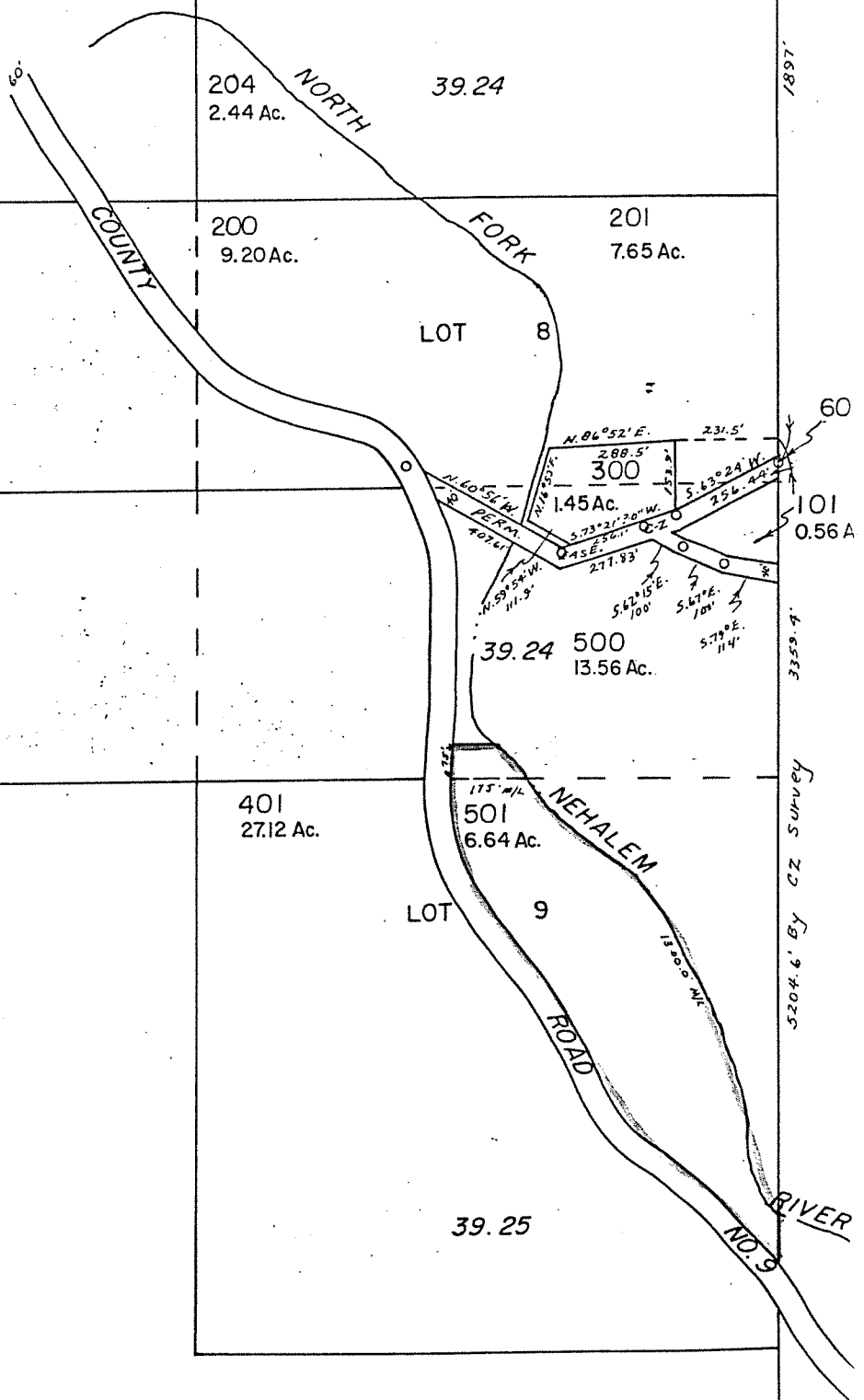
39.24 500
13.56 Ac.

401
27.12 Ac.

501
6.64 Ac.

LOT 9

39.25



SEE MAP 4 8

SEE MAP 4 8